

OFFICE SPACE AVAILABLE Tradelane Broadview Business Center

2600 S 25th Avenue, Broadview, IL



BUILDING HIGHLIGHTS

- Building Size: 38,184 SF Total
- Office Suites Available 1,480 SF – 5,014 SF
- Professionally Managed, Multi-Tenant Building
- Easy Interstate Access (1 Mile to I-290)
- Centrally Located Between Chicago and The Western Suburbs
- Variety of Unit Sizes Offer Potential to Grow Within The Building
- Abundant Parking
- Proximity to Restaurants, Shopping and Hotels
- Industrial Space is Also Available On Site

OFFICE SPACE AVAILABLE

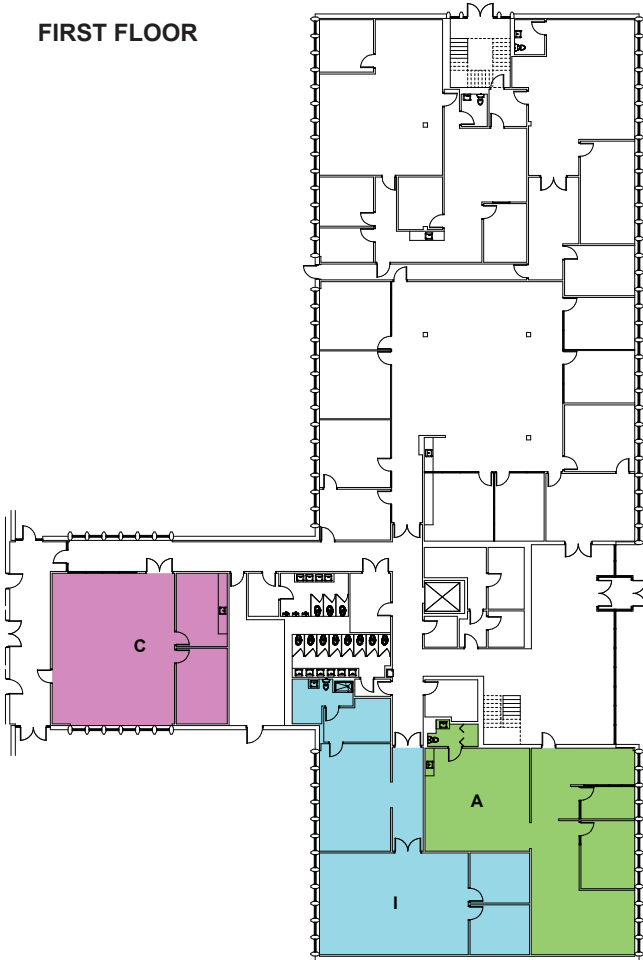
Tradelane Broadview Business Center

2600 S 25th Avenue, Broadview, IL

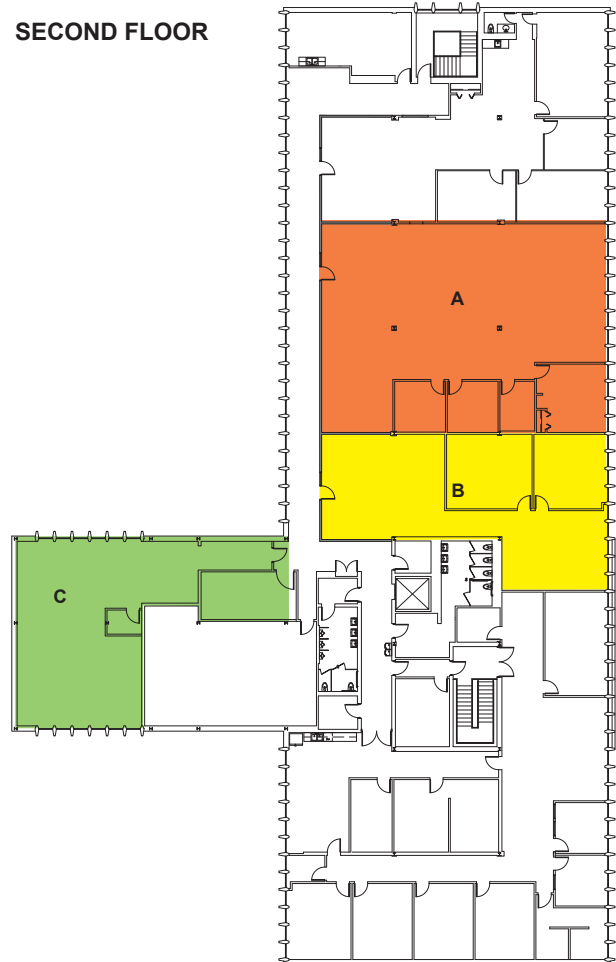
TradeLane
Properties

NAI Hiffman

FIRST FLOOR



SECOND FLOOR



Availabilities

	SUITE C	1,480 SF
	SUITE I	2,139 SF
	SUITE A	1,898 SF

	SUITE A	3,123 SF
	SUITE B	1,891 SF
	SUITE C	2,518 SF



Contact

Ryan Maher - NAI Hiffman
630.693.0677
rmaher@hiffman.com

Terry Herlihy - NAI Hiffman
630.693.0664
therlihy@hiffman.com