

61,231 SF AVAILABLE

# 909 ASBURY DRIVE

BUFFALO GROVE, IL



# PROPERTY OVERVIEW



FREE STANDING HIGH-IMAGE  
HEADQUARTERS BUILDING



RARELY AVAILABLE LARGE  
PARKING FIELD



EXCELLENT LOCATION NEAR  
194, I294 AND ROUTE 53  
INTERCHANGES



LOW LAKE COUNTY REAL  
ESTATE TAXES

61,231 SF  
TOTAL BUILDING SIZE

33,677 SF  
(CAN BE REDUCED)  
OFFICE SPACE

4  
INTERIOR DOCKS

1  
DRIVE-IN DOOR

22'  
CLEAR HEIGHT

1989  
YEAR BUILT

170  
CAR PARKING

4 ACRES  
SITE SIZE

40'X40'  
COLUMN SPACING

1,200A/480V  
3 Phase  
POWER

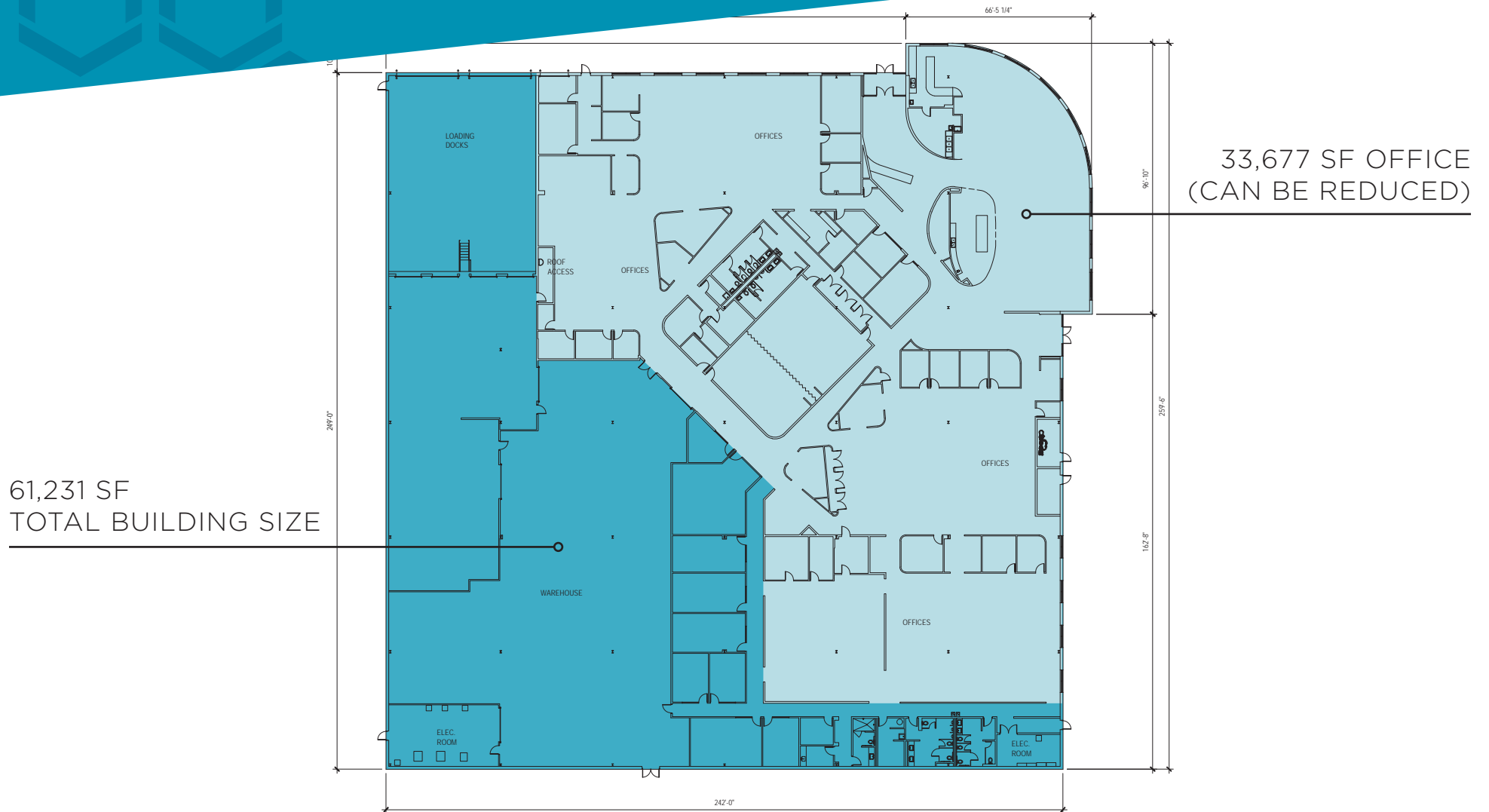
ERIC FISCHER  
Executive Managing Director  
+1 847 720 1369  
eric.fischer@cushwake.com

STEVE STONE, SIOR  
Managing Director  
+ 1 847 720 1364  
steve.stone@cushwake.com

BRETT A. KRONER, SIOR  
Executive Managing Director  
+1 847 720 1367  
brett.kroner@cushwake.com

MARC SAMUELS  
Director  
+1 847 720 1368  
marc.samuels@cushwake.com

# SITE PLAN



**ERIC FISCHER**  
Executive Managing Director  
+1 847 720 1369  
eric.fischer@cushwake.com

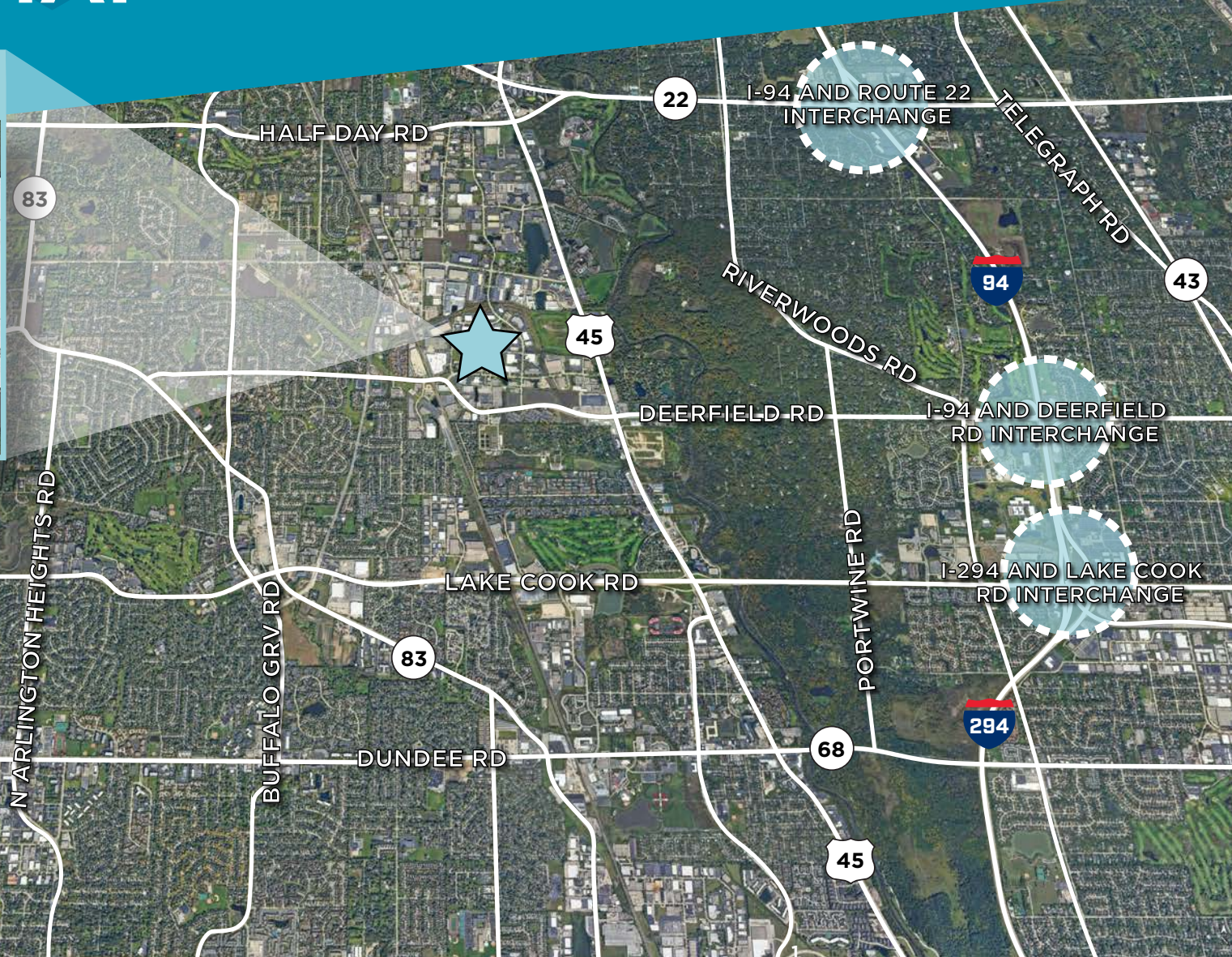
**STEVE STONE, SIOR**  
Managing Director  
+ 1 847 720 1364  
steve.stone@cushwake.com

**BRETT A. KRONER, SIOR**  
Executive Managing Director  
+1 847 720 1367  
brett.kroner@cushwake.com

**MARC SAMUELS**  
Director  
+1 847 720 1368  
marc.samuels@cushwake.com

# AERIAL MAP

## 909 ASBURY DRIVE



**ERIC FISCHER**  
Executive Managing Director  
+1 847 720 1369  
eric.fischer@cushwake.com

**STEVE STONE, SIOR**  
Managing Director  
+ 1 847 720 1364  
steve.stone@cushwake.com

**BRETT A. KRONER, SIOR**  
Executive Managing Director  
+1 847 720 1367  
brett.kroner@cushwake.com

**MARC SAMUELS**  
Director  
+1 847 720 1368  
marc.samuels@cushwake.com

# AMENITIES MAP

## Dining

1. Eddie Merlot's
2. Half Day Brewing Co.
3. Culver's
4. Strawberry Field Cafe
5. Wendy's
6. Walker Bros. Pancake House
7. Starbucks Coffee
8. Porto's Peri-Peri
9. Dunkin' Donuts
10. The Cheesecake Factory
11. Kona Grill
12. Naf Naf Grill
13. Chipotle
14. Fleming's Steakhouse
15. Red Robin
16. Big Bowl
17. Wildfire
18. Siam Siam Thai
19. Tasty Spin Greek
20. Subway
21. Jimmy John's
22. Panera Bread
23. Sarpino's Pizza
24. Potbelly
25. On the Border Cantina
26. MOD Pizza
27. Chick-Fil-A
28. Olive Garden
29. Blufish
30. Portillo's
31. Jameson's Char House
32. McAlister's Deli
33. Sushi Kushi
34. Buffalo Wild Wings
35. Chili's
36. Maggiano's Little Italy
37. The Claim Company
38. Dave & Busters
39. Uncle Julio's
40. Shake Shack
41. Roti
42. Invicto
43. Cafe Zupas
44. SLYCE Coal Fired Pizza
45. Kuma's Corner
46. Buttermilk Cafe
47. City Works
48. Lazy Dog

## Retail

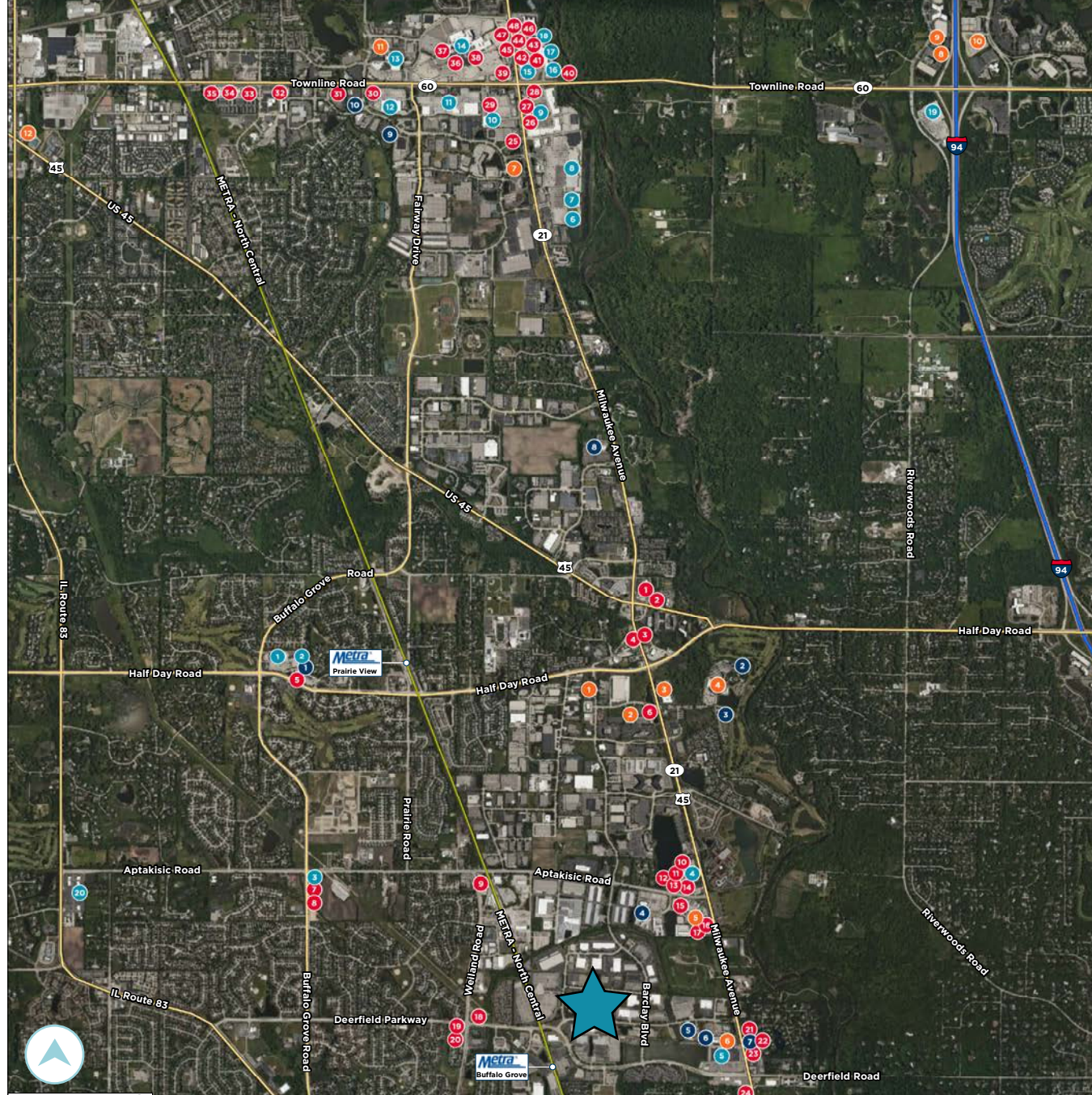
1. Mariano's
2. Marshall's
3. Walgreens
4. Lincolnshire Commons
5. Woodman's Food Market
6. Kohl's
7. Sam's Club
8. The Home Depot
9. Rivertree Court
10. Dick's Sporting Goods
11. Townline Commons
12. SuperTarget
13. Binny's Beverage Depot
14. Hawthorn Mall
15. Whole Foods Market
16. REI
17. HomeGoods
18. Nordstrom Rack
19. Costco
20. Sunset Foods

## Hotels

1. Staybridge Suites
2. SpringHill Suites
3. Courtyard by Marriott
4. Marriott Lincolnshire
5. Hampton Inn
6. Extended Stay America
7. Hotel Indigo
8. Hilton Garden Inn
9. Residence Inn by Marriott
10. Hyatt Place Forester
11. Holiday Inn Express
12. DoubleTree by Hilton

## Recreation

1. Fitness19
2. College Park Athletic Club
3. Crane's Landing Golf Club
4. Regal Cinemas 15
5. RedLine Athletics
6. Sky Fitness
7. Orangetheory Fitness
8. Life Time Fitness
9. Lakeview Fitness
10. Bears Fit Center



**ERIC FISCHER**  
Executive Managing Director  
+1 847 720 1369  
eric.fischer@cushwake.com

**STEVE STONE, SIOR**  
Managing Director  
+ 1 847 720 1364  
steve.stone@cushwake.com

**BRETT A. KRONER, SIOR**  
Executive Managing Director  
+1 847 720 1367  
brett.kroner@cushwake.com

**MARC SAMUELS**  
Director  
+1 847 720 1368  
marc.samuels@cushwake.com



**ERIC FISCHER**  
Executive Managing Director  
+1 847 720 1369  
eric.fischer@cushwake.com

**STEVE STONE, SIOR**  
Managing Director  
+ 1 847 720 1364  
steve.stone@cushwake.com

**BRETT A. KRONER, SIOR**  
Executive Managing Director  
+1 847 720 1367  
brett.kroner@cushwake.com

**MARC SAMUELS**  
Director  
+1 847 720 1368  
marc.samuels@cushwake.com

©2023 Cushman & Wakefield. All rights reserved. The information contained in this communication is strictly confidential. This information has been obtained from sources believed to be reliable but has not been verified. NO WARRANTY OR REPRESENTATION, EXPRESS OR IMPLIED, IS MADE AS TO THE CONDITION OF THE PROPERTY (OR PROPERTIES) REFERENCED HEREIN OR AS TO THE ACCURACY OR COMPLETENESS OF THE INFORMATION CONTAINED HEREIN, AND SAME IS SUBMITTED SUBJECT TO ERRORS, OMISSIONS, CHANGE OF PRICE, RENTAL OR OTHER CONDITIONS, WITHDRAWAL WITHOUT NOTICE, AND TO ANY SPECIAL LISTING CONDITIONS IMPOSED BY THE PROPERTY OWNER(S). ANY PROJECTIONS, OPINIONS OR ESTIMATES ARE SUBJECT TO UNCERTAINTY AND DO NOT SIGNIFY CURRENT OR FUTURE PROPERTY PERFORMANCE.

