

TRADELANE AIRPORT CENTER – HOUSTON

19245 KENSWICK DRIVE, SUITE 100, HUMBLE, TX 77338

Building 2

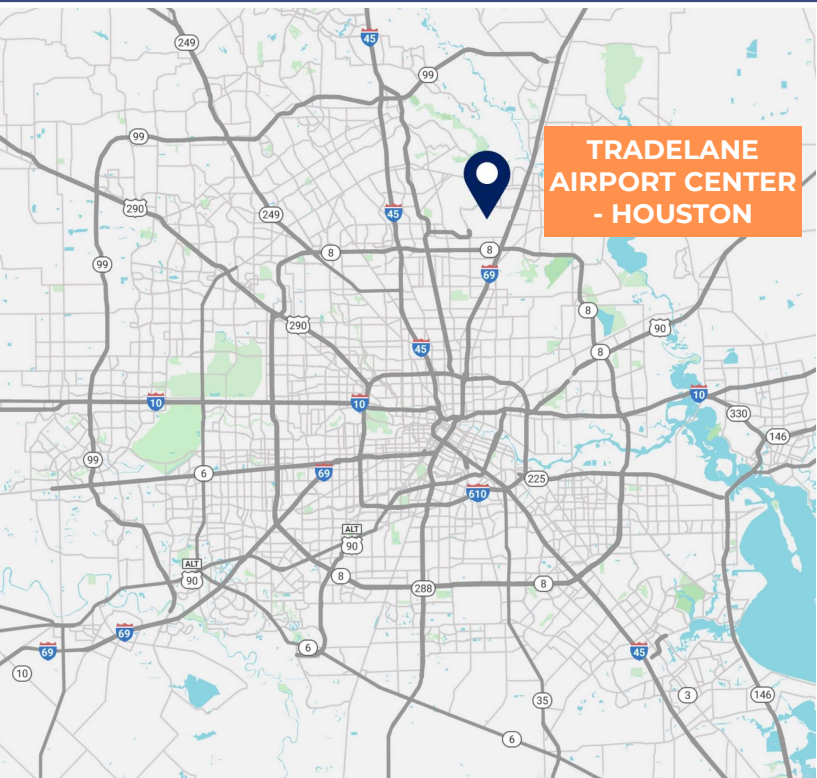


FOR LEASE

LOCATION HIGHLIGHTS:

- Adjacent to George Bush International Airport (IAH)
- Access to Major Thoroughfares, including I-69, I-45, Beltway 8, and FM 1960.
- Desirable Location for Air Cargo Users

33,280 SF



**TRADELANE
AIRPORT CENTER
- HOUSTON**

SPACE FEATURES



33,280 SF AVAILABLE

- 5,081 SF Office
- 28,199 SF Warehouse

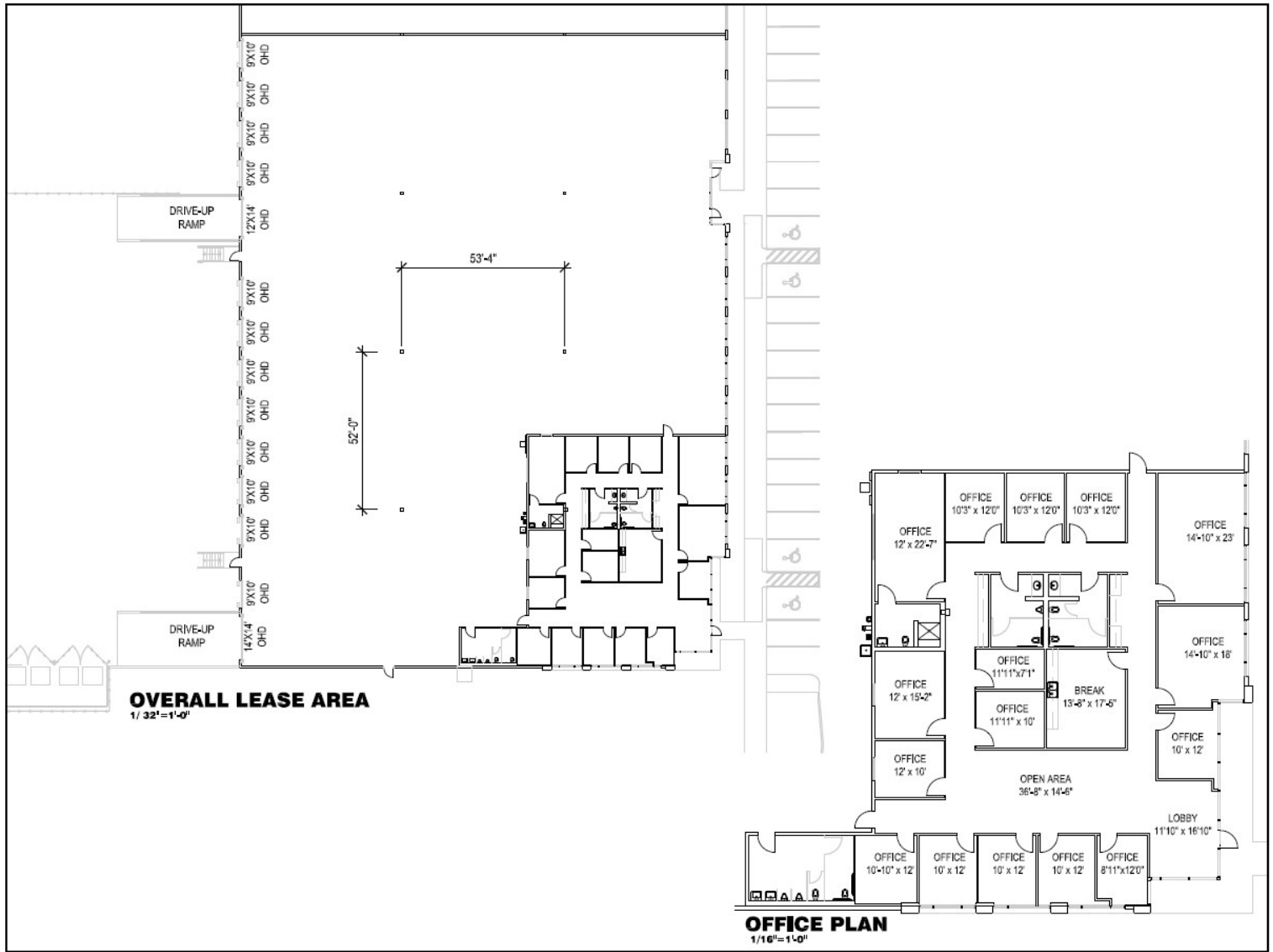
UNIT FEATURES



- (12) 9'x10' Dock High Doors
- (1) 12'x14' Drive-In Ramp
- (1) 14'x14' Drive-In Ramp
- 52' x 53'-4" Column Spacing
- 24' Clear Height
- ESFR Sprinkler System
- Rear Load Configuration
- Ample Parking
- Fenced Truck Court / Paved Outside Storage



33,280 SF – Floor Plan





AERIAL



CONTACT US

JOHN KRUSE
MANAGING DIRECTOR

+1 713 304 4919

john.kruse@cushwake.com

CARTER HOLMES
SENIOR ASSOCIATE

+1 713 417 5447

carter.holmes@cushwake.com

KELLY LANDWERMEYER
MANAGING DIRECTOR

+1 713 249 4295

kelly.landwermeyer@cushwake.com



CONTACT US

JOHN KRUSE
MANAGING DIRECTOR

+1 713 304 4919

john.kruse@cushwake.com

CARTER HOLMES
SENIOR ASSOCIATE

+1 713 417 5447

carter.holmes@cushwake.com

KELLY LANDWERMEYER
MANAGING DIRECTOR

+1 713 249 4295

kelly.landwermeyer@cushwake.com